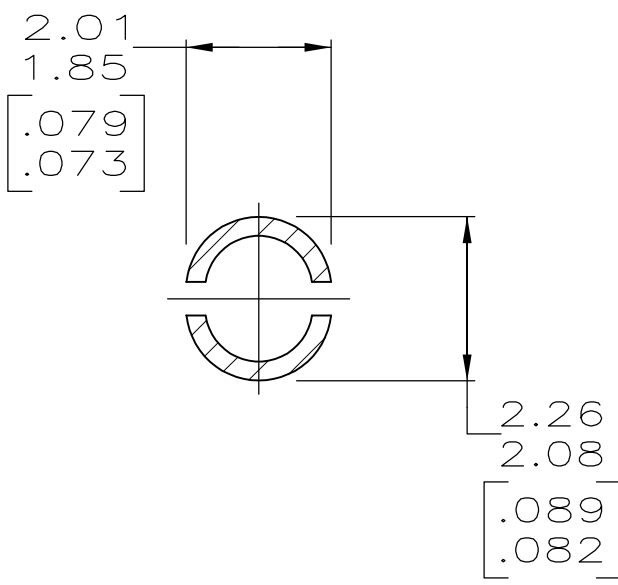
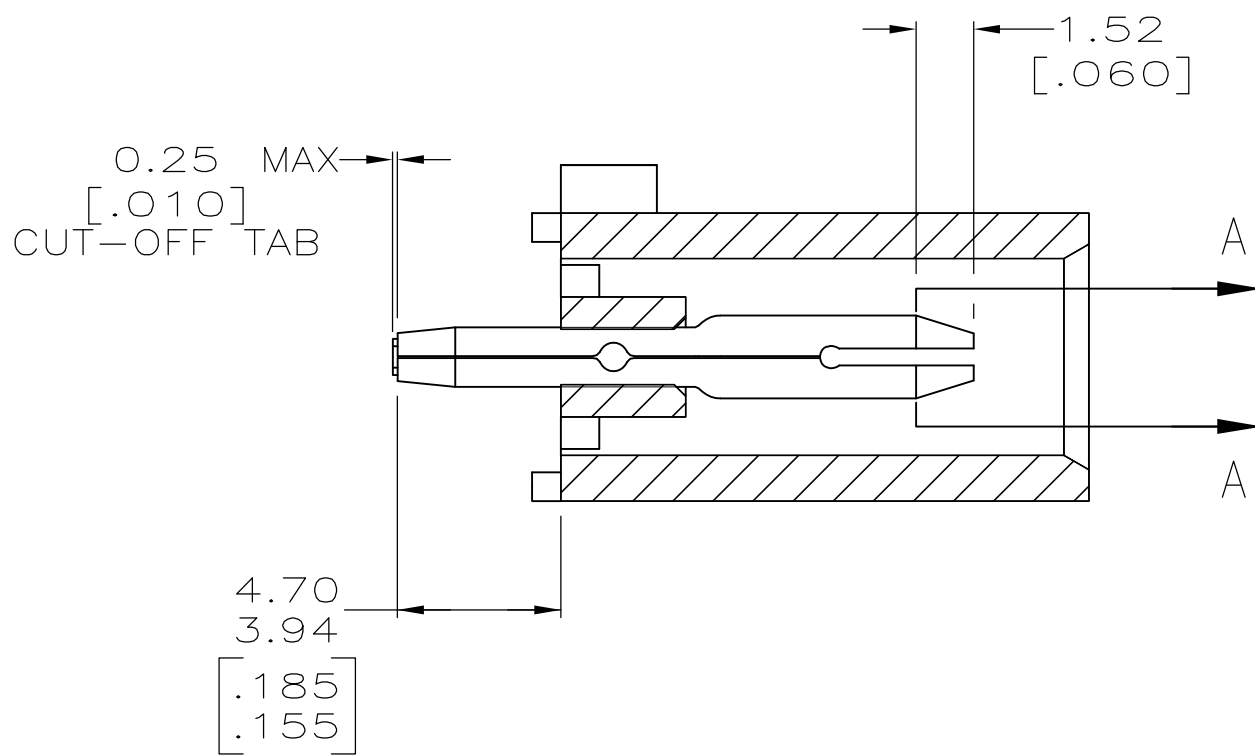
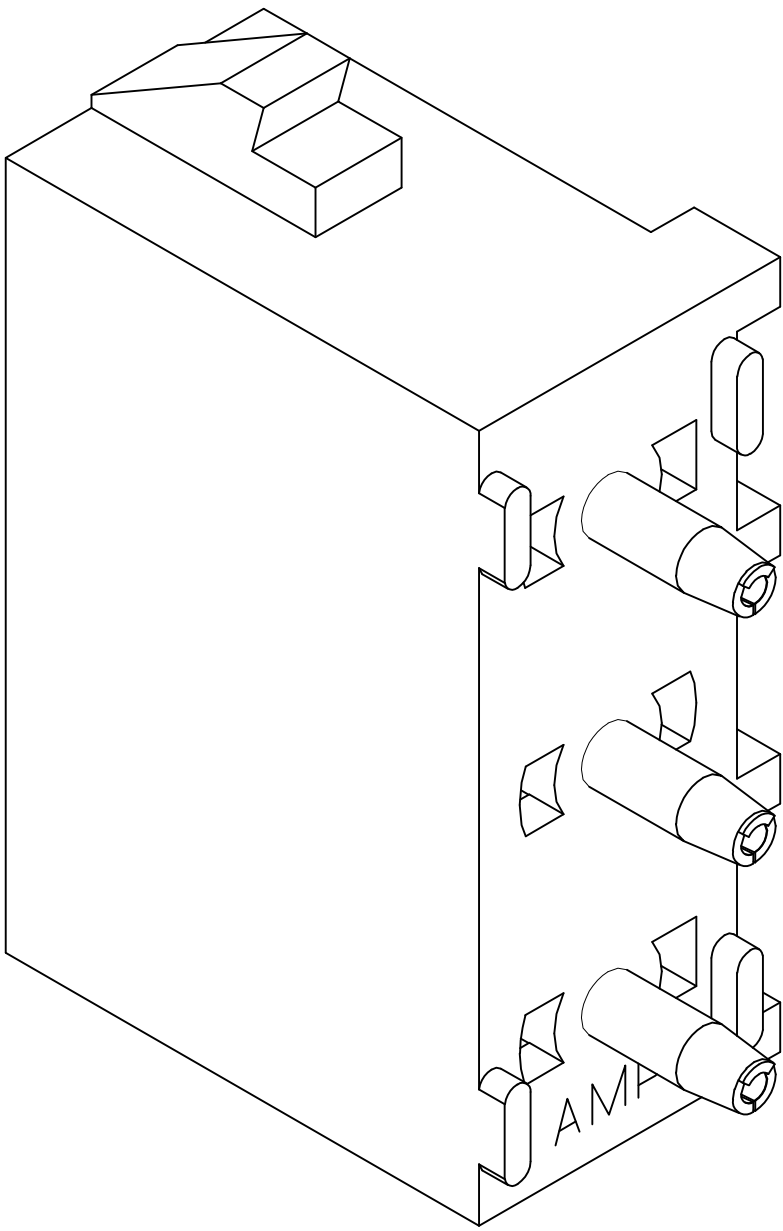
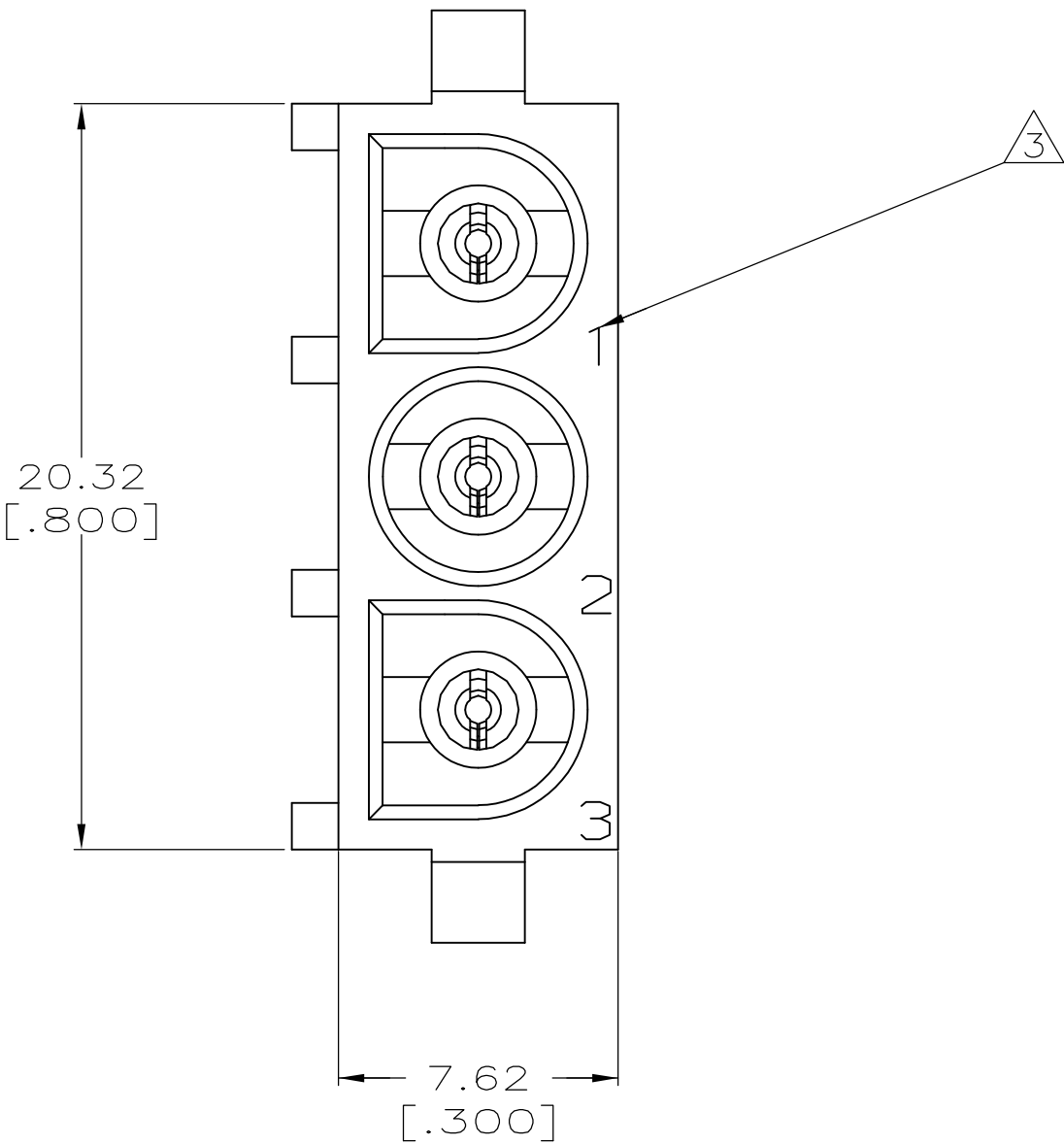
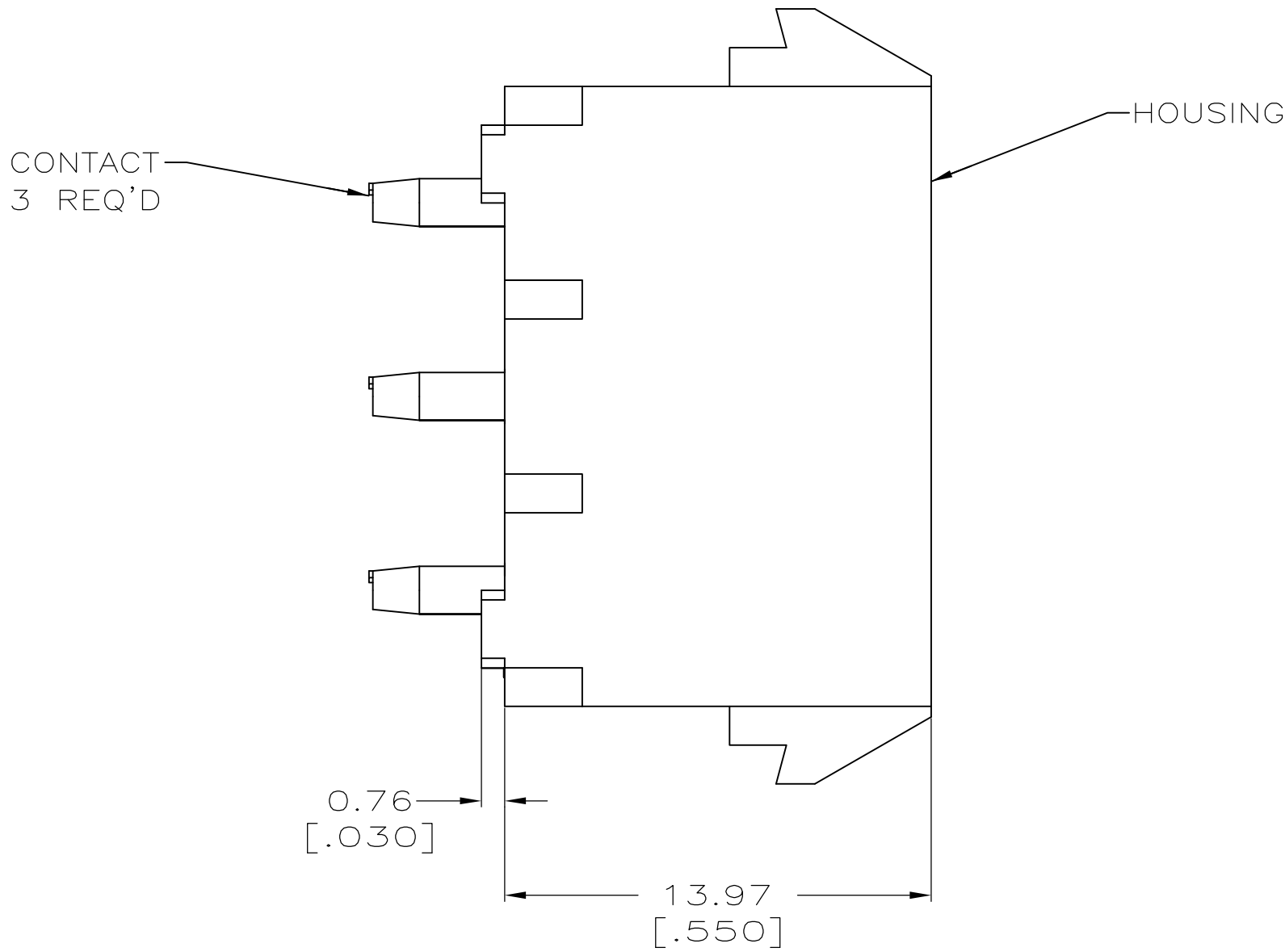
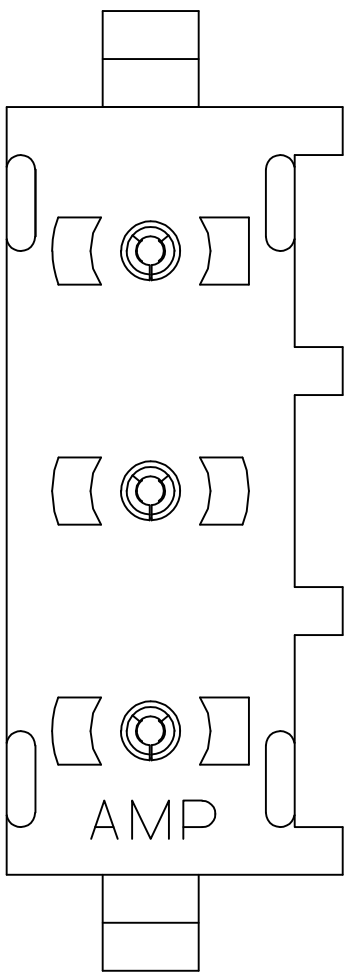
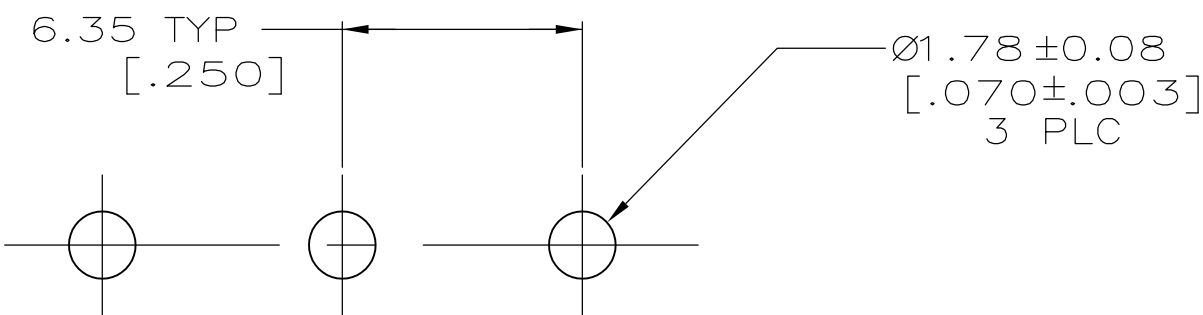


LOC	DIST	REVISIONS				
		REV	LTR	DESCRIPTION	DATE	APP'D
CM	53	A		ECO-07-015160	26JUL07	KW DC


1. PARTS COMPLY TO AMP SOLDERABILITY SPECIFICATION 109-11-3.
2. GLOW WIRE APPROVED, CONTACT TYCO ELECTRONICS ENGINEERING FOR SPECIFICATION.
3. CIRCUIT IDENTIFICATION CHARACTERS ARE ADJACENT TO THE INDICATED CAVITIES, BUT LOCATION AND ORIENTATION MAY DIFFER FROM PRINT.
4. DIMENSIONS IN BRACKETS ARE IN INCHES.



SECTION A—A  
SCALE 10:1



RECOMMENDED MOUNTING HOLE PATTERN  
FOR 1.57 [.062] THICK P.C. BOARD

PHOSPHOR BRONZE, PRE-TIN			NYLON, UL94V-2,NATURAL			1586958-1		
PIN CONTACT MATERIAL AND FINISH			HOUSING MATERIAL			PART NUMBER		
	THIS DRAWING IS A CONTROLLED DOCUMENT.			DWN K. WHITAKER 26JUL2007	Tyco Electronics Corporation Greensboro, NC 27409			
	DIMENSIONS: mm [INCHES]			CHK D. COLEY 26JUL2007	NAME  PIN HEADER ASSEMBLY, 3 CIRCUIT UNIVERSAL MATE-N-LOK(TM)			
				APVD D. COLEY 26JUL2007				
	TOLERANCES UNLESS OTHERWISE SPECIFIED:  0 PLC ± - 1 PLC ± - 2 PLC ± 0.13 [.005] 3 PLC ± - 4 PLC ± - ± 0.30° ANGLES ± 0.30°			PRODUCT SPEC		RESTRICTED TO		
				APPLICATION SPEC				
	MATERIAL SEE TABLE			WEIGHT -		SIZE A1	CAGE CODE 00779	DRAWING NO C=1586958
	FINISH SEE TABLE			CUSTOMER DRAWING		SCALE 5:1	SHEET 1 OF 1	REV A

